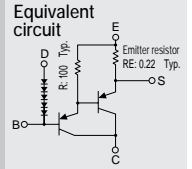


Built-in temperature compensation diodes
Built-in emitter resistor
Darlington

SAP16P



(Complement to type SAP16N)

Application: Audio

■ Absolute maximum ratings (Ta=25°C)

Symbol	Ratings	Unit
V _{CB0}	-160	V
V _{CEO}	-160	V
V _{EBO}	-5	V
I _C	-15	A
I _B	-1	A
P _C	150(T _C =25°C)	W
D _I I _F	10	mA
T _J	150	°C
T _{stg}	-40 to +150	°C

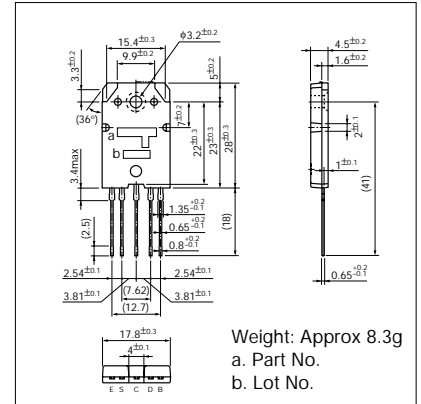
■ Electrical Characteristics (Ta=25°C)

Symbol	Conditions	Ratings			Unit
		min	typ	max	
I _{CB0}	V _{CB} = -160V			-100	μA
I _{EBO}	V _{EB} = -5V			-100	μA
V _{CEO}	I _C = -30mA	-160			V
h _{FE} *	V _{CE} = -4V, I _C = -10A	5000		20000	
V _{CE(sat)}	I _C = -10A, I _B = -10mA			-2.0	V
V _{BE(sat)}	I _C = -10A, I _B = -10mA			-2.5	V
V _{BE}	V _{CE} = -20V, I _C = -40mA		1200		mV
D _I V _F	I _F = 2.5mA		1540		mV
RE	I _E = 1A	0.176	0.22	0.264	Ω
REB		90	100	110	Ω

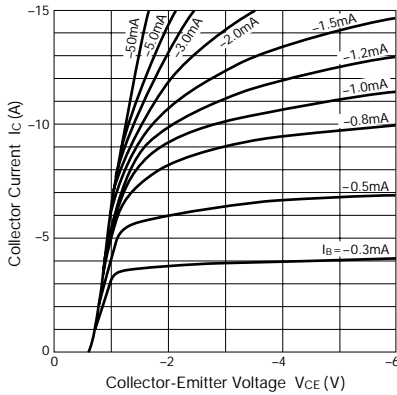
*h_{FE} Rank \bar{O} (5000 to 12000), Y (8000 to 20000)

External Dimensions

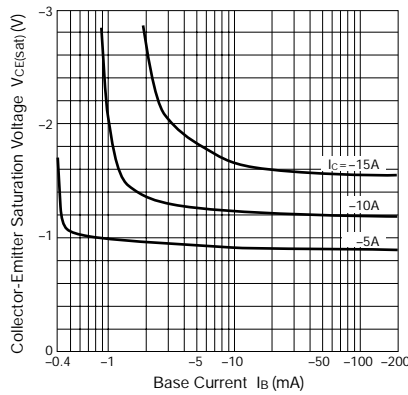
(Unit: mm)



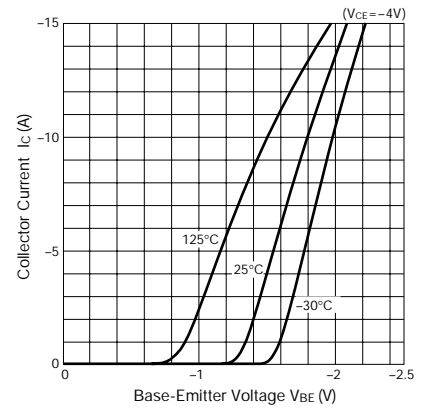
I_C - V_{CE} Characteristics (Typical)



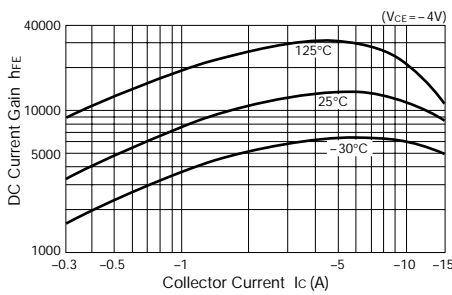
V_{CE(sat)} - I_B Characteristics (Typical)



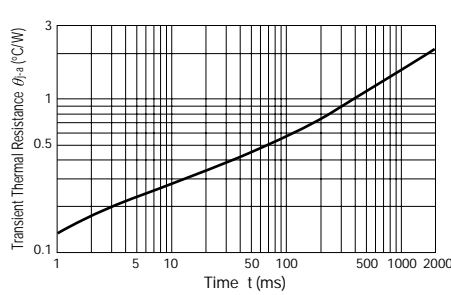
I_C - V_{BE} Temperature Characteristics (Typical)



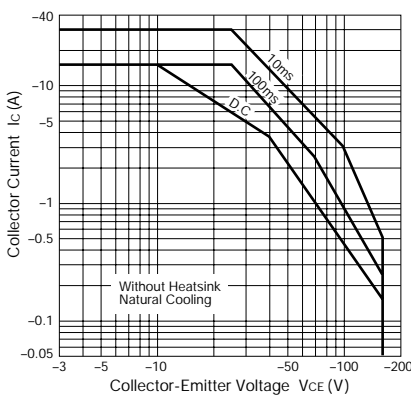
h_{FE} - I_C Characteristics (Typical)



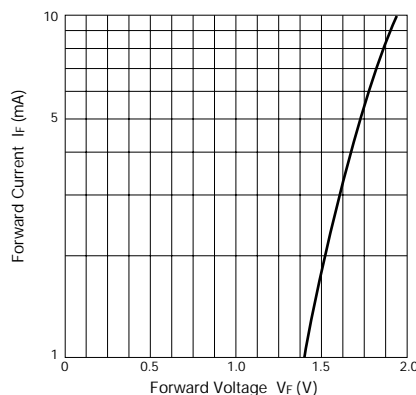
θ_{j-a} - t Characteristics



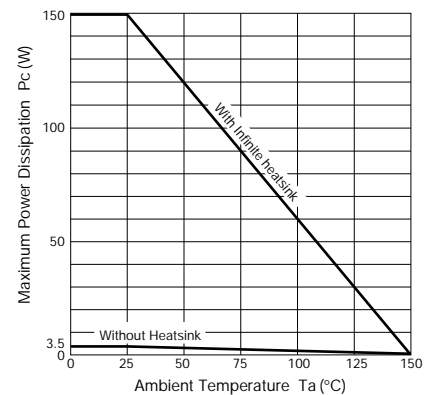
Safe Operating Area (Single Pulse)



D_I I_F - V_F Characteristics (Typical)



P_C - T_a Derating



This datasheet has been download from:

www.datasheetcatalog.com

Datasheets for electronics components.